

Association for the Advancement of Sustainability in Higher Education

# Global Conference on Sustainability in Higher Education

OCTOBER 12 -14 -2021



# GLOBAL CONFERENCE ON SUSTAINABILITY IN HIGHER EDUCATION

Streaming Live: October 12 - 14, 2021



***"Being a host institution was a tremendous opportunity for our campus. We were able to engage more of our employees and students in professional-level sustainability discussions than ever before. Plus, the breadth of presentations--and the focus on equity--helped our community understand that sustainability is about so much more than stewarding the environment."***

***- Casey Meehan, PhD Western Technical College, La Crosse, Wisconsin***

With a theme of "The future is ...", this year's Global Conference on Sustainability in Higher Education reflects the uncertainty about the future that many feel and invites participants to recommit themselves to the urgent work of building a future that is sustainable, equitable and resilient. We seek to highlight inspiring examples of higher education leadership that empower participants to envision and create such a future. Ultimately, the future is ours to make. Are you committed to leveraging the power of higher education to forge a brighter future? Join us at GSCHE!

AASHE invites your institution to join the community as we explore, reexamine and re-envision sustainability in higher education. Become a Host Institution today and engage your entire campus in these critical discussions.

Host Institution sponsorships, available to AASHE members only, provide campuses with a large number of conference registration passes (either 200 or unlimited), as well as unique opportunities to be recognized for their commitment to sustainability. Together we can equip campus change agents with the tools they need to lead the global sustainability transformation.

## INVITE YOUR CAMPUS

Engage more employees and students in professional-level sustainability discussions!

## BEST VALUE

The Host Institution packages represent the best value for attending GCSHE!

## EXTENDED ACCESS

Access all content, (live & on-demand) through December 31st.

# HOST INSTITUTION PACKAGES

## ALL PACKAGES INCLUDE:

- 80 days of access for all registrants - through December 31, 2021
- Dedicated online community via AASHE Connect to collaborate with your colleagues!
- Special student-only email linking to a web-based newsletter for registrants promoting programs of all host institutions and sustainability initiatives.
- Access to the live conference content, as well as on-demand content.
- Recognition during the Official Conference Opening
- Logo recognition on the conference website and in platform slide commercials.
- Press release template highlighting your involvement as a Host Institution
- See complete Terms & Conditions

Purchasing the Host Institution package saved our 2020 GCSHE hosts an average of almost \$18,000 over paying for individual registrations!



BECOME A MEMBER TO ACCESS THIS BENEFIT!

## CAPPED REGISTRATION PACKAGE

\*All pricing in USD

- \$4,500 for 4-year institutions
- \$3,000 for 2-year institutions

Includes:

- 200 registrations passes.
  - Must use approved institutional email domain.

## UNLIMITED REGISTRATION PACKAGE

\*All pricing in USD

- \$5,500 for 4-year institutions
- \$4,000 for 2-year institutions

Includes:

- Unlimited registrations
  - Must use approved institutional email domain.
- 45-minute on-demand virtual tour or session for the conference

*"I pitched the cost of the host institution to my leaders in comparison to the cost of flight, hotel, food, conference fees of sending a single person in other years. It was an easy sell considering this enabled unlimited participation."*  
- Erin Akins, University of Saskatchewan



# IMPORTANT DEADLINES

9/01

Let us know by September 1, 2021 if you want to become a Host Institution to ensure full benefits!

9/15

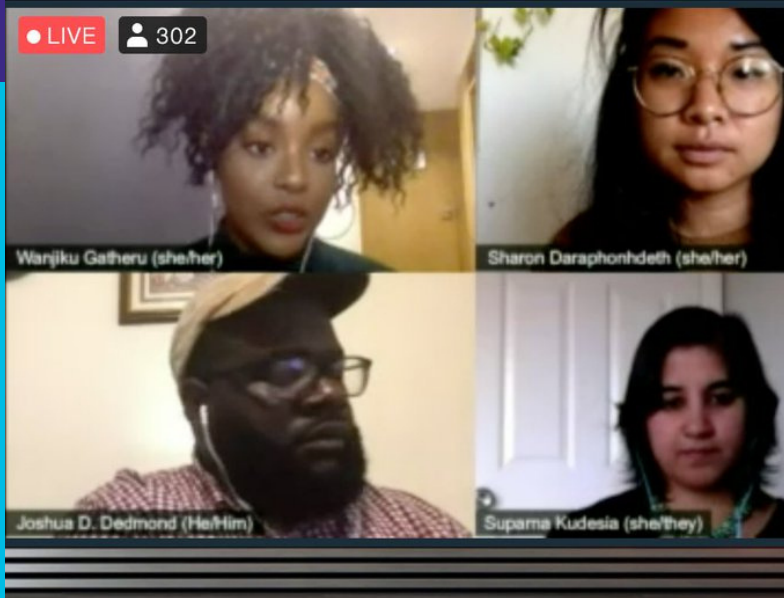
Provide your recorded tour or session by September 15, 2021. \*Unlimited Registration package only.

10/01

October 1, 2021 is the deadline for receipt of sponsorship payments to ensure benefits.

10/14

Register attendees by October 14, 2021 to access the on-demand content.



*"By being a host institution, we were able to open the opportunity up to all segments of the university to learn more about sustainability. The knowledge provided by the conference has allowed us to plant the seed of sustainability in some new areas of us. Our hope is that these seeds of knowledge will sprout, and increase our campus population with a keen interest in sustainability."*

*- Philip Reeder, Duquesne University*



# Not an AASHE member?



The Host Institution Sponsor package is only available to AASHE member institutions. Not a member? Consider joining today to take advantage of this exclusive opportunity and other benefits to support your campus's sustainability goals.

## HAVE QUESTIONS?

### **AASHE Contact:**

Heather Lynch

Tel: (888) 347-9997 x. 133

Email: [Heather.Lynch@aashe.org](mailto:Heather.Lynch@aashe.org)

## ABOUT AASHE

AASHE empowers higher education administrators, faculty, staff and students to be effective change agents and drivers of sustainability innovation. AASHE enables members to translate information into action by offering essential resources and professional development to a diverse, engaged community of sustainability leaders. We work with and for higher education to ensure that our world's future leaders are motivated and equipped to solve sustainability challenges.

See complete [Terms & Conditions](#)